



JUNE 2023

DAIRY VIDEO SALE IN TWIN FALLS, ID!



SALE LOCATION:
THE HILTON GARDEN INN
1741 HARRISON ST N.
TWIN FALLS, ID 83301

FRIDAY- JUNE 2, 2023 @ 11AM MDT (10AM PACIFIC)



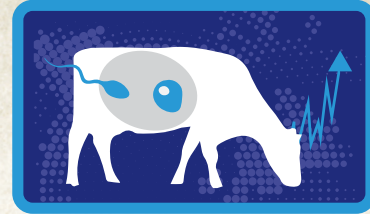
LIVE BROADCAST & ONLINE BIDDING VIA:
WWW.TLAYDAIRYVIDEOSALES.COM

LANDER VETERINARY CLINIC

Meeting Your Dairy Needs
1-STOP DAIRY SHOP

209-634-5801

**4512 S. WALNUT RD.
TURLOCK CA 95380**



Lander

VETERINARY CLINIC ET/IVF

COW HEALTH & GENETICS

- Herd Health & Nutrition
- IVF/ET Facilities
- Interstate Transport Certification/Testing Services
- Herd Health Consulting



As one of the largest milk quality laboratories in California, Dairy Diagnostics is designed to meet the microbiological testing needs of Central Valley Dairymen.

DAIRY DIAGNOSTICS SERVICES

- Milk Quality Assessment and Culture
- Antimicrobial Residue Testing
- BioPRYN® Pregnancy Diagnosis
- Aerobic and Mycoplasma Cultures
- Bulk Tank Monitoring Program
- Whole Herd Cultures
- Milker Trainings
- Parlor Evaluation



QUALITY MILK SERVICE I N C

FULL SERVICE VET PHARMACY

- Competitive Prescription Pricing
- OTC Animal Health Products

DIRECT DAIRY DELIVERY AVAILABLE

- Online Ordering Available
- No Cost Drop-Shipping
- Weekly Delivery Available

**FIND OUT MORE ONLINE AT
WWW.LANDERVET.COM**



BREEDING

BULLS

AVAILABLE

REGISTERED Bulls from some
of the breed leading cows in
the industry today!

HILMAR HOLSTEINS

Registered Holsteins

21859 Crane Ave | Hilmar, Ca 95324
Aaron's Cell: 209-652-3540



JUNE 2023 DAIRY VIDEO SALE

FRIDAY - JUNE 2, 2023 @ 11 AM MDT (10 AM PACIFIC)

SALE LOCATION:

THE HILTON GARDEN INN

1741 HARRISON ST N.

TWIN FALLS, ID 83301

**LIVE BROADCAST
& ONLINE BIDDING
VIA:**

WWW.TLAYDAIRYVIDEOSALES.COM

**SALE CAN BE WATCHED VIA
FACEBOOK LIVE ON
@turlocklivestockauctionyard**

WEBSITE:

WWW.TLAYDAIRYVIDEOSALES.COM

**LIVE SALE DAY BID LINE:
209.633.8115**

SALE CONTACTS

JAKE BETTENCOURT 209.262.4019

NATALIE SANDERS 209.678.3261

MIKE RALLS 209.495.9056

TABITHA XAVIER: 209.416.9148

RYAN MATHERON 209.652.3511

TLAY DVS OFFICE 209.633.8146

CA REPRESENTATIVES

MAX OLVERA 209.277.2063

STEVE FARIA 209.988.7180

BUD COZZI: 209.652.4480

DAVID MACEDO: 559.901.7081

ID REPRESENTATIVE

JOHNNY FREITAS 208.863.1016

OR/WA REPRESENTATIVE

EMILY UNRAU 541.619.6291

CO / KS REPRESENTATIVE

CRAIG WEICHEL 970.302.0018

RJ HARTNAGLE 970.396.5788

TEXAS REPRESENTATIVE

KRISTIN ROLLIN 209.402.0952

NEBRASKA REPRESENTATIVE

ERIN MAROTZ 402.480.1461

AZ REPRESENTATIVE

RICK LEHMAN 602.481.3879

Buy **Quality**, with **Reliable** Cow Information,
and you get **Peace of Mind**.
Bid here today with total **Confidence**.

TLAY *Dairy Video Sales* **Quality Program**

THE TLAY DAIRY VIDEO SALE (DVS) QUALITY PROGRAM IS A TOOL WE HAVE IMPLEMENTED FOR EVEN MORE ASSURANCE AND CONFIDENCE FOR OUR BUYERS. CONSIGNORS HAVE THE OPPORTUNITY TO ADD VALUE AND VALIDITY TO THEIR CONSIGNMENTS BY QUALIFYING FOR DIFFERENT LEVELS OF THE PROGRAM. THE PARAMETERS ARE LISTED BELOW.

RFID/ELECTRONIC ID

CONSIGNORS WHO USE RFID OR ELECTRONIC EAR ID QUALIFY

FRESH COW SAMPLING PROTOCOL

CONSIGNORS WHO HAVE A FRESH COW SAMPLING PROTOCOL IN PLACE FOR ALL FRESH COWS/HEIFERS TO MONITOR MILK QUALITY. CONSIGNORS WHO DO NOT SAMPLE ALL FRESH COWS/HEIFERS, BUT DO SAMPLE THE SALE GROUP/S FOR MILK QUALITY ALSO QUALIFY. ALL OF THESE TESTS/RECORDS AVAILABLE UPON REQUEST.

SHARED VACCINATION PROTOCOL

CONSIGNORS ARE WILLING TO SHARE VACCINATION PROTOCOL FROM BIRTH TO DRY QUALIFY. FULL PROTOCOL AND PROGRAMS AVAILABLE UPON REQUEST

BVD TESTING

CONSIGNORS WHO HAVE A BVD TESTING PROGRAM IN PLACE FOR THE ENTIRE HERD QUALIFY. ALL TEST RESULTS AVAILABLE UPON REQUEST.

CONSIGNORS WHO QUALIFY FOR ALL FOUR TIERS WILL BE LABELED AS PLATINUM

CONSIGNORS WHO QUALIFY FOR 3 OF THE 4 TIERS WILL BE LABELED AS GOLD

CONSIGNORS WHO QUALIFY FOR 2 OF THE 4 TIERS WILL BE LABELED AS SILVER



4/4 Tiers Met



3/4 Tiers Met



2/4 Tiers Met

Welcome...

Welcome to the June TLAY Dairy Video Sale, from Twin Falls Idaho. What an opportunity for us to host this sale near so many of our customers and friends in the Twin Falls area.

Please join us at the Hilton Garden Inn located at 1741 Harrison St N, Twin Falls Idaho 83301. Sale will start at 11 am MT (10 am PT). Lunch to follow the sale.

In honor of Father's Day this month, we want to acknowledge all of the hard working Dads, Happy Fathers Day. TLAY Dairy Video Sales is proud to bring you some outstanding consignments. We would like to acknowledge our repeat consignors, for their continued trust that they place in us every month to merchandise their cattle. Welcome to several new consignors this month, starting in Idaho with J & V Dairy, Pearson Dairy, and No View Dairy. From Colorado Bella Holsteins and from Kansas Prairie View Holsteins. And from California Double Diamond Dairy and Salt River Farms. In addition we have the opportunity to market two outstanding heifer programs, Bar Vee Dairy from Turlock California, and Kingdom Dairy from Garden City Kansas. Rounding out the lineup is a unique opportunity to invest in a Cal Denier bull currently at stud and being collected.

With summer approaching we have some optimism within our industry, the salvage values have continued strong with some of the biggest beef checks being issued the last several months. Additionally the feeder market is incredibly stout, holding up the floor on holstein open heifers. Darn sure a good time to clean up your herd/s and capitalize on these two markets.

I would like to take a minute and recognize our team here at TLAY Dairy Video Sales. It takes a lot of behind the scenes work to produce these monthly sales as well as dispersal sales in between. Miles, hours and long days and nights. We are truly blessed to have the team we have, and they all work tirelessly to contribute to our organization's success. Hats off to our team and representatives.

We will be offering options on several lots this month, for those of you on the click be prepared for the opportunity to select those options. In consecutive order only. Please note the shipment windows stated in the catalog and work with us to stick to them. We all know that trucking and logistics is challenging, however, we ask that you assist us in holding to them.

To any new buyers out there, understand that all of these lots have been sorted and filmed by one of our representatives. The cattle you see in the film are the cattle you are bidding on. Upon purchase, we will be in contact with you to arrange shipment dates and trucking. TLAY Dairy Video Sales will assist the seller in all necessary health and brand papers. In addition, at the time of shipment, we will always represent the best interest of the buyer on the final sort before loading. In most cases you will have the records digitally before the cattle arrive, all dairy herd records are transferred seamlessly. At TLAY Dairy Video Sales we strive for consistency, quality, and integrity. Our commitment is to transparency and customer service. Bid with confidence.

Whether you choose to be here with us live, watch by going to our website at www.tlaydairyvideosales.com and using the phone bank (209-633-8115), or use the click to bid feature, we will be here for you. If using the click to bid, please be registered before 8am sale day to allow time for approval. Please keep in mind that our platform works best with the CHROME browser, www.tlaydairyvideosales.com. The Video Sale will also be streaming on Facebook live. Whichever way you decide to watch, make sure you have good internet service. "Max Bid" bids can be placed starting at 7am on sale day; in the event you cannot be in front of your computer for the sale. We are not privy to these bids or the amounts. Please call us with any questions you may have.

In the event that you buyers choose to not attend the shipments, know that we will as always, represent you and your best interest. TLAY Dairy Video Sales stands behind these consignments 100 percent as we represent them accurately, with the utmost integrity.

Thank you for your continued support, be safe and God Bless!
Jake Bettencourt
TLAY Dairy Video Sales

BID BY PHONE OR ONLINE!

ONLINE BID INSTRUCTIONS LOCATED AT THE BACK OF THE CATALOG.

REMINDER: GO TO WWW.TLAYDAIRYVIDEOSALES.COM

CLICK THE LOG IN TO SALE TAB

REMEMBER TO GET REGISTERED EARLY IF YOU INTEND TO BID ONLINE!

**SCAN THE QR CODE FOR
ALL OF THE
JUNE 2023
DVS VIDEOS!**



CLICK THE BLUE VIMEO LINK BELOW
EACH LOT LISTING TO SEE VIDEO OF
CATTLE SELLING IN THAT LOT



CALIFORNIA

6300 MILKING COWS 2X
89.5LBS HERD AVG ON HOLDS.
105,000 SCC

*RFID/ELECTRONIC ID TAGS
*MILK SAMPLING
*SHARED VACCINATION PLAN

**LOTS 600 & 601
DOUBLE DIAMOND DAIRY**

BARN TYPE: PARRALEL

SHIP DATE: JUNE 5-9 FROM EL NIDO, CA

***THIS GROUP INCLUDES DAUGHTERS OF:** 551H3945 JUSTO, 551H13885 VELLON, 777H111432 TOPSOIL, 777H11200 ZEBRA, 523H1468 DELTA, & 551H4213 UTICA

COMMENTS: THE FIRST 90 HD IN THE POST FRESH PEN WERE OFFERED TO SORT FROM. BEAUTIFUL UDDERS WITH STRONG FRAMES THAT WILL MILK HARD FOR MANY LACTATIONS.

REPRESENTATIVE: TLAY/MIKE RALLS

**LOT 600 35 HOLSTEIN 1ST LACT FRESH COWS
AVG DIM: 38 (RANGE: 19-52) AVG MILK: TOO FRESH FOR TEST**

<https://vimeo.com/830845515>

PRICE:\$ _____

**LOT 601 35 HOLSTEIN 1ST LACT FRESH COWS
AVG DIM: 65 (RANGE: 52-77) AVG MILK: TOO FRESH FOR TEST**

<https://vimeo.com/830845539>

PRICE:\$ _____



800 HOLSTEIN COWS
3.75 FAT 3.2 PRO 160,000 SCC

IDAHO

LOTS 602 & 603
NO VIEW DAIRY, LLC
BARN TYPE: PARRALEL

SHIP DATE: JUNE 5-9 FROM KIMBERLY, ID

*SHARED VACCINATION PLAN
*MILK SAMPLING
*BVD TESTING

***THIS GROUP INCLUDES DAUGHTERS OF:** 7H13624 SUPREME, 7H14732 MERIDIAN, 551H3379 DELTA-LAMB-DA, 551H3142 DECKER, 11H12263 ALTAPINETTA, & 11H12287 ALTAEDIFY

***COWS OVER 70 DIM SERVICED TO:** 629J4326 JOCKEY, 629J4309 BECKS, & 629J4376 JUSTICE

COMMENTS: 1STS HAVE SOME SIZE VARIANCE, MEDIUM TO LARGE FRAMES WITH GOOD UDDERS AND MORE MILK TO COME. LOOK WHAT THEY WILL BECOME IN THE 2ND LACTS: COWS WITH BIG FRAMES & WELDED ON UDDERS READY TO MAKE SUMMER MILK.

REPRESENTATIVE: TLAY/JOHNNY FREITAS

LOT 602 36 HOLSTEIN 1ST LACT FRESH
AVG DIM: 57 (RANGE: 34-94) AVG MILK: 68LBS

<https://vimeo.com/830845535>

PRICE: \$ _____

LOT 603 32 HOLSTEIN 2ND LACT FRESH
AVG DIM: 60 (RANGE: 30-106) AVG MILK: 86LBS

<https://vimeo.com/830845536>

PRICE: \$ _____

KANSAS

LOT 604
PRAIRIE VIEW HOLSTEINS
BARN TYPE: PARABONE

34 HOLSTEIN 1ST LACTATION COWS
130 DIM AVG (RANGE 29-265) - AVG MILK: 65LBS
SHIP DATE: JUNE 5-9 FROM SENECA, KS

***THIS GROUP INCLUDES DAUGHTERS OF:** 7H12569 HEISENBERG, 7H12837 ZAMBONI, 7H12600 MODESTY, & SOME MISSING SIRE INFO

***COWS OVER 70 DIM SERVICED TO:** 250H13736 HARDROCK, 507H15112 TAOS, & 507H15471 ZZ TOP

COMMENTS: ABOUT 65% HOME RAISED & 35% PURCHASED AS OPEN HEIFERS. THEY ARE NOT BANGS VACCINATED. QUALITY UDDERED GROUP OF YOUNG COWS WITH A SPREAD IN CALVING DATES. NEARLY ALL WILL BE SERVICED AT DELIVERY WITH 20% CONFIRMED PREG. DON'T LET THE PRODUCTION SCARE YOU, MORE MILK TO COME WITH GROUP OF OPEN RIBBED, GREAT UDDERED YOUNG COWS.

REPRESENTATIVE: TLAY/ERIN MAROTZ

<https://vimeo.com/830845528>

PRICE: \$ _____



560 MILKING COWS
3.76 FAT 3.29 PRO 111,000 SCC

IDAHO

LOTS 605 & 606

PEARSON DAIRY

SHIP DATE: JUNE 5-9 FROM BUHL, ID

- *RFID/ELECTRONIC ID TAGS
- *SHARED VACCINATION PLAN
- *MILK SAMPLING
- *BVD TESTING

***THIS GROUP INCLUDES DAUGHTERS OF:** 7H12837 ZAMBONI, 7H13334 PHANTOM, 14H14768 ARCANA & HERD BULL

***SERVICES SIRES INCLUDE:** 7H15949 ROLLO, 7H15233 MILKY, 7H15987 FROGGER, 7H15563 IMPACT, ANGUS & HERD BULL

COMMENTS: GOOD SPREAD OF CALVING WINDOW ON THESE 2 GROUPS. WELL GROWN HOLSTEIN HEIFERS OUT OF TOP SELECT SIRES BULLS & BRED TO THEM AS WELL.

REPRESENTATIVE: TLAY/JOHNNY FREITAS

LOT 605 38 HOLSTEIN SPRINGERS
DUE: 7/4-9/13

<https://vimeo.com/830845666>

PRICE:\$ _____

LOT 606 40 HOLSTEIN BRED HEIFERS
DUE: 9/14-12/7

<https://vimeo.com/830845682>

PRICE:\$ _____



- *RFID/ELECTRONIC ID TAGS
- *SHARED VACCINATION PLAN
- *MILK SAMPLING
- *BVD TESTING

CALIFORNIA

LOTS 607 & 608

AHLEM FARMS PARTNERSHIP

BARN TYPE: ROTARY

SHIP DATE: JUNE 5-9 FROM HILMAR, CA

***THIS GROUP INCLUDES DAUGHTERS OF:** 507J1769 ARCHIE, 511J7047 SABAN, 597J195 DILBERT, 507J1792 NAVIDAD, & 629J3991 BANCROFT

COMMENTS: 2 GROUPS OF FRESH HEIFERS FROM A BUYER FAVORITE, WELDED ON UDDERS AND TRACK ON SOUND FEET + LEGS. WILL MAKE LONG LASTING, PRODUCTIVE COWS.

REPRESENTATIVE: TLAY

LOT 607 50 HD JERSEY 1ST LACT FRESH
AVG DIM: 28 (RANGE: 18-40) AVG MILK: TOO FRESH FOR TEST

<https://vimeo.com/830845678>

PRICE:\$ _____

LOT 608 50 HD JERSEY 1ST LACT FRESH
AVG DIM: 53 (RANGE: 41-83) AVG MILK: 61LBS

<https://vimeo.com/830845680>

PRICE:\$ _____



CALIFORNIA

- *RFID/ELECTRONIC ID TAGS
- *SHARED VACCINATION PLAN
- *MILK SAMPLING
- *BVD TESTING

LOT 609

FOUR J JERSEYS

BARN TYPE: ROTARY

50 JERSEY 1ST LACTATION FRESH

49 DIM AVG(RANGE: 23-82) - AVG MILK: 54LBS (ON TESTED COWS)

SHIP DATE: JUNE 5-9 FROM TULARE, CA

***THIS GROUP INCLUDES DAUGHTERS OF:** 507J1758 THRASHER, 507J1769 ARCHIE, 507J1787 CALIBAN, 507J1788 HEIST, & 629J4117 WESTPORT

COMMENTS: VERY FRESH GROUP OF TYPEY JERSEYS FROM 100% REGISTERED JERSEY HERD. SIRED BY TOP BULLS WITH MORE MILK TO COME.

REPRESENTATIVE: TLAY/NATALIE SANDERS

<https://vimeo.com/831353944>

PRICE:\$ _____



CALIFORNIA

- *RFID/ELECTRONIC ID TAGS
- *SHARED VACCINATION PLAN
- *MILK SAMPLING
- *BVD TESTING

LOTS 610 & 611

NUNES & SONS DAIRY

BARN TYPE: ROTARY

SHIP DATE: JUNE 5-9 FROM TULARE, CA

***THIS GROUP INCLUDES DAUGHTERS OF:** 507J1657 MIAMI, 507J1722 DASHIELL, 507J1787 CALIBAN, 507J1792 NAVIDAD, & 507J5004 CHROME

***COWS OVER 70 DIM SERVICED TO:** 507J1831 ENSIGN, 614J2114 URI, & 7CH108

COMMENTS: NOW MILKED IN A ROTARY! TWO FRESH GROUPS FROM SOUTH VALLEY HERD THAT PUSHES FOR BIG MILK.

REPRESENTATIVE: TLAY/DAVID MACEDO

LOT 610 50 HD JERSEY 1ST LACT FRESH
AVG DIM: 57 (RANGE: 23-68) AVG MILK: 59LBS

<https://vimeo.com/830845673>

PRICE:\$ _____

LOT 611 50 HD JERSEY 1ST LACT FRESH
AVG DIM: 82 (RANGE: 66-107) AVG MILK: 62LBS

<https://vimeo.com/830845669>

PRICE:\$ _____



CALIFORNIA

240 HD JERSEY/JERSEY CROSSES
52LB HERD AVG
4.7 FAT 3.7 PRO 200,000 SCC
*RFID/ELECTRONIC ID TAGS
*SHARED VACCINATION PLAN

LOTS 612 & 613

SALT RIVER FARMS

BARN TYPE: FLAT BARN

SHIP DATE: JUNE 5-9 FROM FERNDAL, CA

***THIS GROUP INCLUDES DAUGHTERS OF:** 777J10001 CRAZE, 507J1699 PINE, 777J1184 SKYMAN, 7J1294 BARNABAS, 7J1038 VALENTINO, & SOME MISSING SIRE INFO

***COWS OVER 70 DIM SERVICED TO:** 777J924 BILLYBOB, 777J1248 SPIRAL, 777J1285 GUNS N ROSES, 777J1343 WICHITA, & CHAROLAIS

COMMENTS: HALF PURCHASED, HALF HOME RAISED, NICE UNIFORM GROUPS OF JERSEY/JERSEY CROSS. 1 LOAD STRICTLY 1ST LACT, 1 LOAD 60% 2NDS & 40% 3RDS. ALL TB TESTED & READY TO TRAVEL BY SALE DAY.

REPRESENTATIVE: TLAY

LOT 612 40 HD JERSEY 1ST LACT COWS

AVG DIM: 210 (RANGE: 55-390) AVG DCC ON PREG: 166 AVG MILK: NO TEST AVAILABLE

95% SERVICED OR PREG - SOME READY TO DRY

<https://vimeo.com/831088628>

PRICE:\$ _____

LOT 613 45 HD JERSEY 2ND & 3RD LACT COWS

AVG DIM: 142 (RANGE: 34-285) AVG DCC ON PREG: 147 AVG MILK: NO TEST AVAILABLE

<https://vimeo.com/831089094>

PRICE:\$ _____

F&M AREIAS DAIRY DISPERSAL

MODESTO, CA

WEDNESDAY - JUNE 7, 2023 @ 10AM

LUNCH & REFRESHMENTS PROVIDED

COWS SELL LIVE @ TLAY

275 HOLSTEIN MILKING & DRY COWS

HERD IS 60% 1ST & 2ND LACT - MILK WEIGHTS & PREG STATUS WILL BE AVAILABLE

ALL COWS INDIV. SAMPLED FOR STAPH & MYCO / HOME RAISED & BULL BRED HERD

250 HOL. HEIFERS TO SELL FRIDAY - JUNE 9, 2023

SPRINGERS - BREDS - OPENS

WILL BE SORTED & CONFIRMED FOR PREG BY LANDER VET @ TLAY

REPRESENTATIVES

MAX OLVERA 209.277.2063 STEVE FARIA 209.988.7180

JAKE BETTENCOURT 209.262.4019 MIKE RALLS 209.495.9056

BUD COZZI 209.652.4480 TIM SISIL 209.631.6054

TRAVIS JOHNSON 209.996.8645 JUSTIN RAMOS 209.844.6372

NATALIE SANDERS 209.678.3261 OFFICE 209.634.4326



10430 N. LANDER AVE TURLOCK CA 95380

WWW.TURLOCKLIVESTOCK.COM



TEXAS

- *RFID/ELECTRONIC ID TAGS
- *SHARED VACCINATION PLAN
- *MILK SAMPLING
- *BVD TESTING

LOTS 614-616 AHLEM FARMS VISTA

SHIP DATE: JUNE 5-9 FROM DALHART, TX FOR LOTS 614 & 615
JUNE 12-16 FOR LOT 616

***THIS GROUP INCLUDES DAUGHTERS OF:** 507J1617 KIAWA, 507J1890 DECATUR, 507J1787 CALIBAN, 507J1822 FRINGE, & 507J1814 DIMITRI
***SERVICES SIRES INCLUDE:** 550J1947 CORSAIR, 507J1816 TUCKER, 614J1955 CORDOBA, 507J1909 SAN-CHO, & 507J1913 ALCAN
COMMENTS: BIG FRAMED JERSEY SPRINGERS WITH GREAT UDDER PROMISE AND GOOD FEET + LEGS. FROM A HIGH PRODUCTION FOCUSED CA HERD AND IN A PRIME SPOT TO TRAVEL.

REPRESENTATIVE: TLAY/KRISTIN ROLLIN

LOT 614 50 JERSEY SPRINGERS
DUE: 8/1-8/12 92% CONF. SEXED SEMEN

<https://vimeo.com/830849165>

PRICE:\$ _____

LOT 615 50 JERSEY SPRINGERS
DUE: 8/12-8/18 98% CONF. SEXED SEMEN

<https://vimeo.com/830849172>

PRICE:\$ _____

LOT 616 50 JERSEY SPRINGERS
DUE: 8/18-8/31 89% CONF. SEXED SEMEN

<https://vimeo.com/830849173>

PRICE:\$ _____



TEXAS

- *RFID/ELECTRONIC ID TAGS
- *SHARED VACCINATION PLAN
- *MILK SAMPLING
- *BVD TESTING

LOT 617 CLAUSS DAIRY FARMS

50 JERSEY SPRINGERS
DUE: 8/1-8/31 91% CONF. SEXED SEMEN
SHIP DATE: JUNE 12-16 FROM DALHART, TX

***THIS GROUP INCLUDES DAUGHTERS OF:** 7J1722 DASHIELL, 7J1769 ARCHIE, 7J1726 STARLORD, 7J1820 HOLEINONE, & 7J1882 CARBINE
***SERVICE SIRES INCLUDE:** 614J2061 RAMADA, 550J1947 CORSAIR, 550J1834 STURGIS, 507J2089 FACTION, & 14J1924 PHIL
COMMENTS: NICE GROUP OF SPRINGERS FROM A FOUNDATION HERD THAT HAS BRED MILK CHART TOPPERS AND MAKES LONG LASTING PRODUCTIVE COWS. GOOD SQUARE UDDERS COMING UNDERNEATH.

REPRESENTATIVE: TLAY/KRISTIN ROLLIN

<https://vimeo.com/830849171>

PRICE:\$ _____



TEXAS

LOT 618

YOSEMITE JERSEY DAIRY

- *RFID/ELECTRONIC ID TAGS
- *SHARED VACCINATION PLAN
- *MILK SAMPLING
- *BVD TESTING

50 JERSEY SPRINGERS

DUE: 7/14-7/29 95% CONF. SEXED SEMEN

SHIP DATE: JUNE 5-9 FROM DALHART, TX

***THIS GROUP INCLUDES DAUGHTERS OF:** 507J1832 R2D2, 507J1822 FRINGE, 507J161 KIAWA, 507J1760 ROWAN, & 550J1834 STURGIS

***SERVICE SIRES INCLUDE:** 507J1816 TUCKER, 550J1834 STURGIS, 614J1873 FOXWORTH, & 507J1913 ALCAN

COMMENTS: WELL GROWN SPRINGERS FROM RECENTLY DISPERSED HERD. TOP JERSEY HERD IN THE NATION FOR MANY YEARS WITH GREAT SIRES & PRODUCTION BEHIND THEM. NOT MANY GROUPS LEFT.

REPRESENTATIVE: TLAY/KRISTIN ROLLIN

<https://vimeo.com/830849169>

PRICE:\$ _____



IDAHO

LOT 619

J&V DAIRY

2337 MILKING COWS
4.7 FAT 3.7 PRO 166,000 SCC

- *RFID/ELECTRONIC ID TAGS
- *SHARED VACCINATION PLAN
- *MILK SAMPLING
- *BVD TESTING

50 JERSEY SPRINGERS

DUE: 6/19-9/28 75% CONF. SEXED SEMEN

SHIP DATE: JUNE 5-9 FROM SHOSHONE, ID

***THIS GROUP INCLUDES DAUGHTERS OF:** NO SIRE INFO AVAILABLE

***SERVICE SIRES INCLUDE:** 629J4219 DAWSON, 629J4273 BETTIS, 629J4275 BOOTS, 829XB720 & 11AN2265

COMMENTS: GOOD CONDITION AND READY TO TRAVEL THESE IDAHO JERSEY SPRINGERS HAVE A GOOD SPREAD OF CALVING WINDOW TO GIVE YOU SUMMER & FALL MILK!

REPRESENTATIVE: TLAY/JOHNNY FREITAS

<https://vimeo.com/830849166>

PRICE:\$ _____



OREGON

LOT 620

MEENDERINCK DAIRY

- *RFID/ELECTRONIC ID TAGS
- *SHARED VACCINATION PLAN
- *MILK SAMPLING
- *BVD TESTING

50 JERSEY SPRINGERS

DUE: 7/1-8/5 84% CONF. SEXED SEMEN

SHIP DATE: JUNE 5-9 FROM HERMISTON, OR

***THIS GROUP INCLUDES DAUGHTERS OF:** 507J704 FULLER, 614J1712 CAS, 607J110 KLEERY,

507J504 CHROME, & 507J1116 STARKHOUSE

***SERVICE SIRES INCLUDE:** 507J5052 CLOSER, 507J1965 BLIZZARD, 507J1822 FRINGE, 614J1834 WELD, & 1J7245 AGENT

COMMENTS: WELL GROWN JERSEY SPRINGERS OUT OF AND BRED TO TOP BULLS. HEIFERS TRACK ON GOOD FEET & LEGS WITH GREAT UDDER PROMISE AND READY TO TRAVEL.

REPRESENTATIVE: TLAY/EMILY UNRAU

<https://vimeo.com/830850953>

PRICE:\$ _____

SCRATCHED

CALIFORNIA

LOTS 621 - 630

BAR VEE DAIRY

SHIP DATE: JUNE 5-9 FROM TURLOCK, CA

SIRES INCLUDE: 200J1196 JAYWALK, 551H4144 HEATER, 200J1142 KOBE, 100H12172 HIGHSPEED, 100J7413 DOC, 100H12152 JAGUAR, & 100J7403 CHICAGO, FROM 627 TO 630 HAS SOME NORWEGIAN RED SIRES: 652NR12068, 652NR12027, 652NR12135, & 652NR11690

SERVICE SIRES INCLUDE: ALL BRED TO NORWEGIAN RED BULLS. 652NR12135, 652NR11690, 652NR12222, & 652NR11935

COMMENTS: THIS IS THE ENTIRE HEIFER PROGRAM FROM THE BAR VEE DAIRY. ESTABLISHED IN 1968, THE CROWELL FAMILY STARTED MILKING HIGH QUALITY HOLSTEIN UNTIL MAKING THE DECISION TO CROSS THEM WITH JERSEY BULLS TO HELP CAPTURE A BETTER MILK PRICE. A FEW YEARS AGO THE DECISION WAS MADE TO INTRODUCE A THIRD CROSS INTO THE BREEDING PROGRAM. ALL HEIFERS ARE BRED TO NORWEGIAN RED BULLS AND A SMALL PORTION ANGUS. HEIFERS ARE TRAINED TO HEADLOCKS & FREESTALLS. AGAIN THIS IS THE ENTIRE HEIFER PROGRAM, NOTHING HELD BACK. THE HEIFERS ARE TB CLEAR AND READY TO TRAVEL. THE LAST GROUP IS STILL AT THE CALF RANCH LOCATED AT NICHOLAS CALF RANCH IN SNELLING, CA.

REPRESENTATIVE: TLAY/MIKE RALLS

LOT 621 BAR VEE DAIRY 47 HD CROSS SPRINGERS

DUE: 6/16-7/27

<https://vimeo.com/830850971>

PRICE:\$ _____

LOT 622 BAR VEE DAIRY 50 HD CROSS SPRINGERS

DUE: 8/1-9/13

<https://vimeo.com/831230836>

PRICE:\$ _____

LOT 623 BAR VEE DAIRY 55 HD CROSS BRED HEIFERS

DUE: 9/18-10/29

<https://vimeo.com/830850968>

PRICE:\$ _____

LOT 624 BAR VEE DAIRY 58 HD CROSS BRED HEIFERS

DUE: 10/30-12/15

<https://vimeo.com/830850963>

PRICE:\$ _____

LOT 625 BAR VEE DAIRY 62 HD CROSS SERV/SHORT PREGS HEIFERS

AGE: 14-16 MONTHS

<https://vimeo.com/830850962>

PRICE:\$ _____

LOT 626 BAR VEE DAIRY 67 HD CROSS OPEN/SERV HEIFERS

AGE: 11.5-14 MONTHS

<https://vimeo.com/830850956>

PRICE:\$ _____

LOT 627 BAR VEE DAIRY 70 HD CROSS OPEN HEIFERS

AGE: 8.5-11.5 MONTHS

<https://vimeo.com/830851330>

PRICE:\$ _____

LOT 628 BAR VEE DAIRY 117 HD CROSS OPEN HEIFERS

AGE: 5-8.5 MONTHS

<https://vimeo.com/830851338>

PRICE:\$ _____

LOT 629 BAR VEE DAIRY 38 HD CROSS OPEN HEIFERS (LIGHT LOAD OR BIG GOOSENECK)
AGE: 4-5 MONTHS

<https://vimeo.com/830851334>

PRICE:\$ _____

LOT 630 BAR VEE DAIRY 104 HD NORWEGIAN RED CROSS OPEN HEIFERS
UNDER 4 MONTHS (AT NICHOLAS CALF RANCH)

<https://vimeo.com/830851331>

PRICE:\$ _____



3200 MILKING COWS
93LBS HERD AVG
4.0 FAT 3.1 PRO 130,000 SCC

COLORADO

*RFID/ELECTRONIC ID TAGS
*MILK SAMPLING
*SHARED VACCINATION PLAN

**LOTS 631-637
BELLA HOLSTEINS**

SHIP DATE: JUNE 12-16 FROM PLATTEVILLE, CO

SIRES INCLUDE: 200H11330 MAESTRO, 507H15112 TAOS, 200H11852 PINBALL, 550H15235 MUSCLES,
7H12111 DRAGONHEART, 7H14859 MAXIMUS, 7H15036 ZEV, 7H15142 BEAR, 7H15273 LAWLESS,
& 7H15532 BIG ORBITZ

SERVICE SIRES INCLUDE: 614H16222 HARPED, 507H15793 PEARCE, & 7AN625

COMMENTS: HOLSTEIN HEIFERS IN A HANDY SPOT READY TO TRAVEL ANY DIRECTION FROM TOP
COLORADO HERD WITH GENERATIONS OF BREEDING BEHIND THEM.

REPRESENTATIVE: TLAY/CRAIG WEICHEL/RJ HARTNAGLE

LOT 631 BELLA HOLSTEINS 50 HD HOLSTEIN OPEN/SOME SERV HEIFERS
AGE: 13-14 MONTHS EST. AVG WEIGHT: 996LBS

<https://vimeo.com/831019369>

PRICE:\$ _____

LOT 632 BELLA HOLSTEINS 55 HD HOLSTEIN OPEN HEIFERS
AGE: 13 MONTHS EST. AVG WEIGHT: 956LBS

<https://vimeo.com/831019381>

PRICE:\$ _____

LOT 633 BELLA HOLSTEINS 59 HD HOLSTEIN OPEN HEIFERS
AGE: 11-13 MONTHS EST. AVG WEIGHT: 851LBS

<https://vimeo.com/831019389>

PRICE:\$ _____

LOT 634 BELLA HOLSTEINS 67 HD HOLSTEIN OPEN HEIFERS
AGE: 8-11 MONTHS EST. AVG WEIGHT: 740LBS

<https://vimeo.com/831019380>

PRICE:\$ _____

LOT 635 BELLA HOLSTEINS 70 HD HOLSTEIN OPEN HEIFERS
AGE: 7-8 MONTHS EST. AVG WEIGHT: 625LBS

<https://vimeo.com/831019388>

PRICE:\$ _____

LOT 636 BELLA HOLSTEINS 94 HD HOLSTEIN OPEN HEIFERS
AGE: 5-7 MONTHS EST. AVG WEIGHT: 540LBS

<https://vimeo.com/831019376>

PRICE:\$ _____

LOT 637 BELLA HOLSTEINS 100 HD HOLSTEIN OPEN HEIFERS
AGE: 4-5 MONTHS EST. AVG WEIGHT: 470LBS

<https://vimeo.com/831019410>

PRICE:\$ _____



KANSAS

HERD SIZE: 1900 MILKING
83LBS HERD AVG. 3X
3.69 FAT 3.37 PRO
DFA QUALITY AWARD WINNER SINCE 2017

LOTS 638-656
KINGDOM DAIRY

SHIP DATE: JUNE 5-16 FROM SATANTA, KS

- *BVD TESTING
- *RFID/ELECTRONIC ID TAGS
- *MILK SAMPLING
- *SHARED VACCINATION PLAN

SIRES INCLUDE: 511H11781 UPSHOT, 511H12168 GILMORE, 511H12345 SOHOT, 511H12374 MGM, 511H12384 PLEDGE, 511H12406 REMEDY, 511H14200 FAVIAN, 511H15007 EXPECT, 511H15053 TIKI, 511H15060 SHAZAM, & 511H15537 MOTZA

SERVICE SIRES INCLUDE: 511H15060 SHAZAM, 511H15235 FAULT, 511H15429 SHAMROCKER, 511H15438 GULLIVER, 511H15462 STARSHIP, 511H15679 ALL ACCESS, 11SM2072 & 11SM2076

COMMENTS: THE KINGDOM DAIRY HEIFER PROGRAM IS OFFERED IN ITS ENTIRETY EXCLUDING THE HEAVIEST PREG HEIFERS AND THE YOUNGEST AT CALF RANCH. KINGDOM DAIRY LOCATED IN MCCOOK NE, HEIFERS LOCATED AT CIRCLE BAR HEIFER RANCH SOUTH OF GARDEN CITY KS. PROGRAM IS 90% HOLSTEIN, BALANCE BEING HOL/JERSEY CROSS. HEIFERS ARE SORTED BY BREED. PREGNANT HEIFERS SORTED BY DCC, OPEN HEIFERS SORTED BY AGE. OPEN & SERVICED HEIFERS WILL BE SOLD BY THE POUND. STRAIGHT UP WEIGH UP. HEIFERS ARE SOLID WITH GOOD FEET + LEGS, GOOD SQUARE UDDERS UNDERNEATH AND PLENTY OF RIB. CONDITION IS EXCEPTIONAL. OPTION TO LEAVE AT CIRCLE BAR HEIFER RANCH UPON APPROVAL. TB IS DONE, CATTLE ARE READY TO TRAVEL.

REPRESENTATIVE: TLAY/CRAIG WEICHEL/RJ HARTNAGLE

LOT 638 KINGDOM DAIRY 38 HD HOLSTEIN SPRINGERS
DUE: 8/10-8/24 71% CONF SEXED SEMEN

<https://vimeo.com/831019424>

PRICE:\$ _____

LOT 639 KINGDOM DAIRY 40 HD HOLSTEIN SPRINGERS
DUE: 8/26-9/7 75% CONF SEXED SEMEN

<https://vimeo.com/831019419>

PRICE:\$ _____

LOT 640 KINGDOM DAIRY 42 HD HOLSTEIN BRED HEIFERS
DUE: 9/8-9/25 70% CONF SEXED SEMEN

<https://vimeo.com/831019420>

PRICE:\$ _____

LOT 641 KINGDOM DAIRY 44 HD HOLSTEIN BRED HEIFERS
DUE: 9/25-10/19 77% CONF SEXED SEMEN

<https://vimeo.com/831019416>

PRICE:\$ _____

LOT 642 KINGDOM DAIRY 44 HD HOLSTEIN BRED HEIFERS
DUE: 10/19-11/6 90% CONF SEXED SEMEN

<https://vimeo.com/831019412>

PRICE:\$ _____

LOT 643 KINGDOM DAIRY 46 HD HOLSTEIN BRED HEIFERS
DUE: 11/6-12/5 82% CONF SEXED SEMEN

<https://vimeo.com/831021002>

PRICE:\$ _____

LOT 644 KINGDOM DAIRY 50 HD HOLSTEIN SHORT BRED HEIFERS
DUE: 12/5-1/1 78% CONF SEXED SEMEN

<https://vimeo.com/831021010>

PRICE:\$ _____

**LOT 645 KINGDOM DAIRY 50 HD SERV/FEW SHORT PREGS HEIFERS
AGE: 14-18 MONTHS EST. AVG WEIGHT: 998LBS**

<https://vimeo.com/831021008>

PRICE:\$ _____

**LOT 646 KINGDOM DAIRY 54 HD OPEN/SERVICED HEIFERS
AGE: 13-14 MONTHS EST. AVG WEIGHT: 940LBS**

<https://vimeo.com/831021007>

PRICE:\$ _____

**LOT 647 KINGDOM DAIRY 57 HD HOLSTEIN OPEN/FEW SERV HEIFERS
AGE: 12-13 MONTHS EST. AVG WEIGHT: 905LBS**

<https://vimeo.com/831021005>

PRICE:\$ _____

**LOT 648 KINGDOM DAIRY 60 HD HOLSTEIN OPEN HEIFERS
AGE: 11-12 MONTHS EST. AVG WEIGHT: 855LBS**

<https://vimeo.com/831021004>

PRICE:\$ _____

**LOT 649 KINGDOM DAIRY 64 HD HOLSTEIN OPEN HEIFERS
AGE: 10-11 MONTHS EST. AVG WEIGHT: 802LBS**

<https://vimeo.com/831021033>

PRICE:\$ _____

**LOT 650 KINGDOM DAIRY 68 HD HOLSTEIN OPEN HEIFERS
AGE: 8-10 MONTHS EST. AVG WEIGHT: 752LBS**

<https://vimeo.com/831021043>

PRICE:\$ _____

**LOT 651 KINGDOM DAIRY 77 HD HOLSTEIN OPEN HEIFERS
AGE: 7-8 MONTHS EST. AVG WEIGHT: 667LBS**

<https://vimeo.com/831021042>

PRICE:\$ _____

**LOT 652 KINGDOM DAIRY 88 HD HOLSTEIN OPEN HEIFERS
AGE: 5-7 MONTHS EST. AVG WEIGHT: 580LBS**

<https://vimeo.com/831021040>

PRICE:\$ _____

**LOT 653 KINGDOM DAIRY 78 HD HOLSTEIN OPEN HEIFERS (LIGHT LOAD)
AGE: 4-5 MONTHS EST. AVG WEIGHT: 460LBS**

<https://vimeo.com/831021037>

PRICE:\$ _____

**LOT 654 KINGDOM DAIRY 40 HD CROSS SPRINGERS
DUE: 8/10-10/5 60% CONF. SEXED SEMEN**

<https://vimeo.com/831021035>

PRICE:\$ _____

**LOT 655 KINGDOM DAIRY 43 HD CROSS BRED HEIFERS
DUE: 10/12-1/18 77% CONF SEXED SEMEN**

<https://vimeo.com/831021077>

PRICE:\$ _____

**LOT 656 KINGDOM DAIRY 58 HD CROSS SOME SERV/OPEN HEIFERS
AGE: 8-14 MONTHS EST. AVG WEIGHT: 675LBS**

<https://vimeo.com/831021081>

PRICE:\$ _____

IMPROVE YOUR BOTTOM LINE!

Reduce Herd A.I. Expense with this Genetic Opportunity...



The mother of Midas 1458:
OCD Delta Missy 4212-ET "EX-94 2E"
Mammary System EX-97



Herd Sire selling with Collected Semen!

**LOT
657**

CAL-DENIER-I J MIDAS1458-ET

Born November 30, 2021 Registration No. 70354997

99%RHA-I *TR*TP*TC*TL*TD A1/A2 • AE

GTPI +2666 +.15%F +.06%P +2.4PL +.5DPR +2.47T +2.05UDC +1.33FLC

•SELLS WITH 500 UNITS of COLLECTED SEMEN

Genomically superior in all areas emphasized by profit minded dairymen!
Review the full genomic profile here:



Sire:

Peak Jagger-ET 734HO121

3205436591 *TR*TP*TC*TY*TV

PTA +56M +56F +27P 81R 4/23

PTA +428NM +.19%F +.09%P +1.9PL

PTA +3.72T +2.93UDC +2.04FLC 81R 4/23

GTPI +2702

Dam:

OCD Delta Missy 4212-ET

3127421836 Excellent-94 (MS:97) 2E 6-01

4-04 3x 365d 36,340 3.8 1378 3.3 1213

5-10 2x 302d 34,370 3.9 1353 3.1 1065

3-01 3x 365d 34,300 3.8 1313 3.1 1080

2-01 3x 294d 26,040 3.7 971 3.1 796

Life: 1449d 139,920 3.9 5400 3.2 4497

S: Mr Mogul Delta 1427-ET

Full sister to Missy 4212:

OCD Delta Missy 4202-ET EX-93-5Y-CAN 3*

•Numerous sons in A.I. including Moment,

Mission & Maverick

6 Total Performance Dams

Complete the Pedigree!

Butz-Hill Magical Missy-ET EX-94 2E 5*

4-09 3x 365d 31,940 3.7 1182 3.3 1048

Morsan Man D Missy-ET VG-85 2*

2-04 2x 305d 20,450 5.5 1124 3.5 722

Valleyville Dolman Missy VG-89-4Y-CAN 7*

3-11 2x 365d 44,648 4.6 2075 3.5 1545

Eastside Lewisdale Gold Missy EX-95 2E 32*

5-00 2x 365d 40,483 4.2 1711 3.2 1314

•Supreme Champion WDE & RAWF 2011

•All-American & All-Canadian 5 Year Old 2011

•All-American Junior 3 Year Old 2009

•All-American & All-Canadian Jr. 2 Year Old 2008

•Holstein Canada Cow of the Year 2012

Stadacona Outside Abel VG-88-4Y-CAN 38*

3-03 2x 365d 36,599 4.6 1695 3.0 1093

Stadacona Progress Anibel VG-85-3Y-CAN 2*

4-03 2x 365d 38,186 3.4 1312 3.2 1208

► Cal-Denier-I J Midas1458-ET is housed at JLG Enterprises in Oakdale, CA.

► You can bring the bull to your dairy or leave him at JLG & collect semen from him. Cal-Denier is currently using his semen in their herd.
Included in the sale is 500 units of semen.

► If you want to continue collecting him at JLG, collection & Semen testing costs is \$1.45/unit.

► Feeding & Housing cost is \$12/day when on collection and \$14/day when off collection.

Maternal brothers to 1458 in A.I.:

OCD Thunder Struck-ET 250HO15329

GPTA +3.28T +2.29UDC +1.19FLC 4/23

OCD Mystic Crush-ET 250HO15236

GPTA +3.22T +3.04UDC +1.23FLC 4/23

The Missy family is respected worldwide!

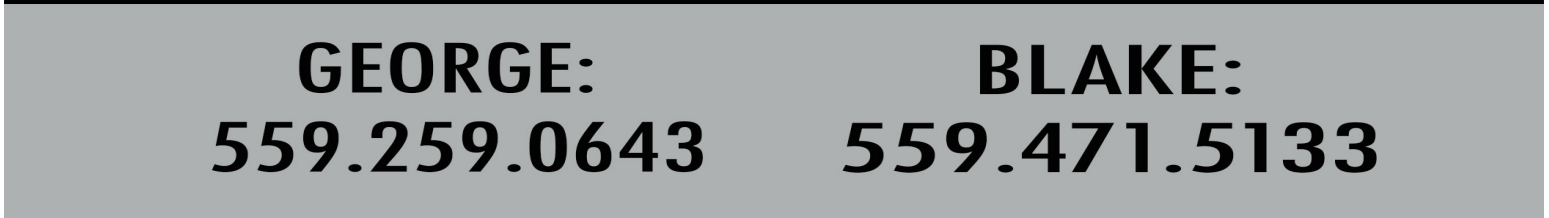
"OCD Delta Missy is truly a crossover cow in the breed. She lived in a commercial environment, yet was from a great Show type maternal line. She and her dam both Scored EX-94 and traces back to the former WDE and Royal Winter Fair Champion Eastside Lewisdale Gold Missy. Her sons have had a positive influence on our Showcase program and the first Thunder Struck daughters are calving in to rave reviews. Her influence remains relevant and looks to for years to come."

Kevin Jorgensen, Senior Holstein Sire Analyst Select Sires

A fantastic opportunity for a large dairy or group of dairies to save many \$ on their semen costs with a bull that is genetically superior to many of those that are available today from A.I.

VIDEO OF BULL : <https://vimeo.com/831021079>

This image shows a blank sheet of white paper with horizontal ruling lines. The lines are evenly spaced and run across the width of the page. There are no margins, text, or other markings on the paper.



BLAKE:
559.471.5133

Miguel Dairy Service



Dairy
Construction

Barn Equipment

Manure
Equipment

Full Line Parts
Sales

Established
Since 1997

GEA Expert Care
Certified

Certified
Hygiene
Services

Trained Service
Technicians

Complete
Milking &
Cooling Service

3640 FM 2856

Hereford TX 79045

806-364-3900



CLICK TO BID INSTRUCTIONS

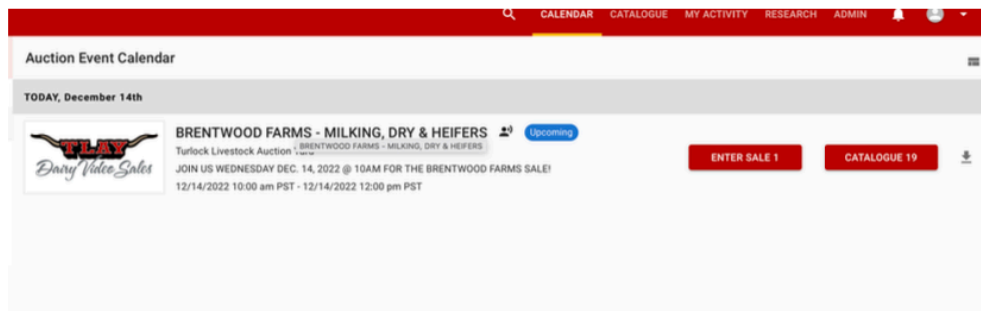
GO TO TLAYDAIRYVIDEOSALES.COM CLICK LOG IN TO SALE TAB OR LOG IN TO SALE IN GREY BOX - PUT IN LOG IN DETAILS ONCE YOU HAVE LOGGED IN TO YOUR ACCOUNT GO TO THE CALENDAR TAB & FIND THAT MONTH'S SALE LISTING THEN:

LOG IN INSTRUCTIONS TO BID!!

1) Log in Screen

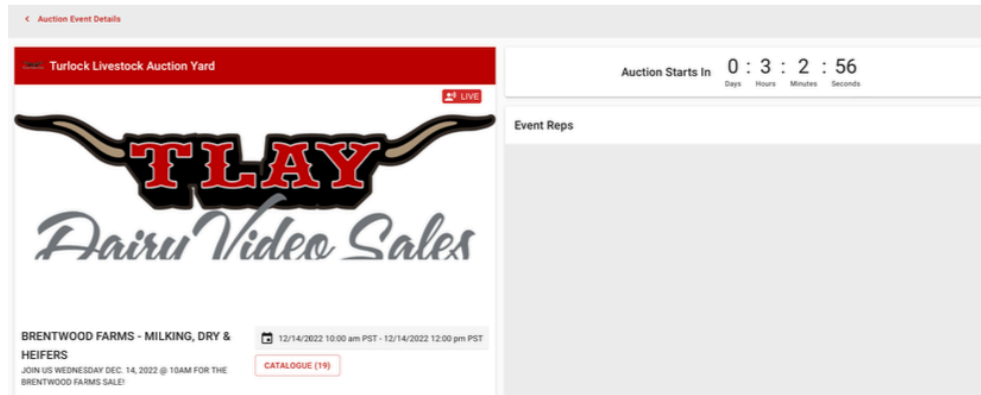
Fill in your email & password.

THERE IS A SPOT TO REGISTER & RESET YOUR PASSWORD IF NEEDED ON THE LOG IN SCREEN.



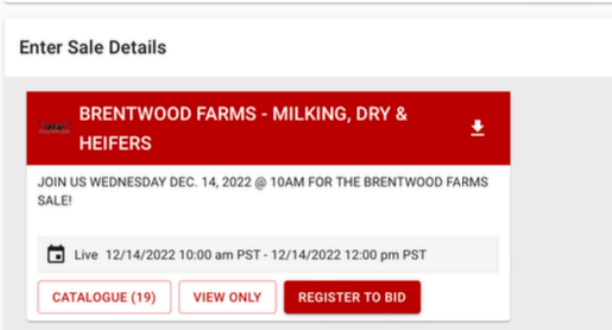
2) Auction Calendar

See Auction Listed
Click Enter Sale 1

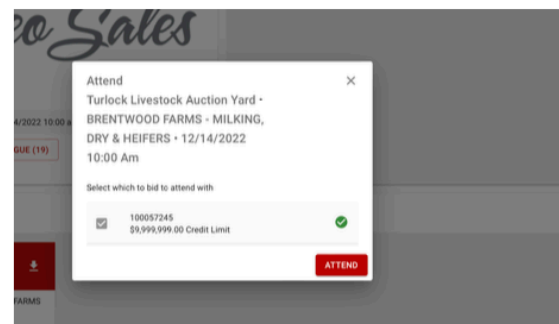


3) LANDING PAGE

SCROLL DOWN!!!



4) FIND EVENT BOX CLICK REGISTER TO BID



5) CLICK ATTEND ON THE POP UP BIDDING APPLICATION WILL NOW LAUNCH!

**** WE STILL RECOMMEND USING CHROME AS YOUR BROWSER**

**** IF YOU HAVE LOST YOUR PASSWORD THERE IS A LINK UNDER LOG IN SPOT TO RESET THE PASSWORD**

**** CALL 209.678.3261 FOR HELP BEFORE THE SALE**

**** IF HAVING ISSUES DURING THE SALE CALL 209.633.8115 FOR THE LIVE BID LINE**

ALFRED MATTHEWS



www.alfredmatthews.com • 3807 McHenry (at Union) in Modesto • 577-0140



A Driving Force in the Community Since 1936

NUMBER 1 IN SALES AND SERVICE IN THE CENTRAL VALLEY



WE HAVE A WORLD CLASS, FACTORY TRAINED SERVICE
DEPARTMENT READY TO SERVICE YOUR GM VEHICLE



I-CAR TRAINED AND OEM CERTIFIED COLLISION
REPAIR FACILITY

**We are here to find the perfect
vehicle for you!**

Ted Fernandes 209-416-7206

General Manager

ALFRED MATTHEWS
"A DRIVING FORCE IN THE COMMUNITY"



SALES:
(209) 846-3989

SERVICE:
(209) 846-3992

Turlock Dairy Video Sale

Terms and Conditions

Each Bidder must be registered and have a buyers number for the sale. Buyer expressly agrees to adhere to these Auction Terms and Conditions.

The Auctioneer reserves the right to reject any and all bids.

If a dispute arises between two or more bidders, the Auctioneer may immediately put the lot up for sale again and resell to the highest bidder. The decision of the Auctioneer shall be final and absolute.

The record of the Auctioneer and the Clerk will be taken as final in the event of any dispute.

Payment is due at or before the shipment date via check or wire transfer. Some delayed deliveries will require a per head deposit which will be disclosed prior to the sale of said lot/s.

All dairy females are sold to be checked for pregnancy status and soundness inside. All milk cows sold to be sound of udder unless otherwise stated. In the case of bred heifers or springing heifers, lots will be guaranteed to deliver exactly as described by the Auctioneers/sale day. Any and all sale day announcements supersede any printed/cataloged information. Also all springers and bred heifers to be titted by buyer or a representative immediately upon arrival to buyer. If this does not happen, TLAY Dairy Video Sale cannot and will not be liable for any issues arising after arrival. All open and breedable heifers to be sold guaranteed as such, unless otherwise stated.

All Dairy Management Records to be transferred (when available and represented as such) with TLAY Dairy Video Sale coordinating the transfer. Any/all Breed Association Registration information to be transferred when applicable with the assistance of TLAY Dairy Video Sale, any expense to be pre-determined prior to sale otherwise transfer will be at the expense of the buyer.

Interstate shipments; Negative TB test and Brand Inspection to be the responsibility of the seller with TLAY Dairy Video Sale assistance. In the event of additional health testing as per receiving state requirements, these tests to be administered under the supervision of TLAY Dairy Video Sale at the expense of the buyer.

Trucking: Cost of trucking is the responsibility of the buyer. TLAY Dairy Video Sales will facilitate the scheduling as well as recommend the use of a preferred hauler but all cattle are sold at final price on the auction block with trucking not included in that figure.

Warranties; Seller warrants clear title of all animals marketed through TLAY Dairy Video Sale. Each animal is sound and healthy in every respect unless otherwise noted in the catalogue or announced by the Auctioneer. Every precaution will be taken to represent the physical condition of each animal exactly as it is known. Any issues to be brought up by the buyer to TLAY Dairy Video Sale representative on the day of shipment or in the buyers absence at the shipment the day of receipt of the cattle. Any delay in this transaction will result in TLAY Dairy Video Sale NOT liable for such issues. Heifers sold open/breedable or confirmed pregnant cows/heifers are in no way guaranteed as to the condition of their udders following calving. Sellers and TLAY Dairy Video Sale guarantee to represent all cattle offered via video auction to be as accurate and transparent as possible with the information they respectively obtain.



MAESTRO

CALORI-D CRS TROPIC MAESTRO

Reg: H0840003202160275 RHA DOB: 20200212 TC TD TL TP TR
aAa: 321 DMS: 126 Beta-Casein: A2A2 Kappa-Casein: HAP:
Tropic x Doc x Yoder / Breeder: Calori-D Holsteins, Denair, CA

TPI 2773 NM\$ 581 CM\$ 595

PRODUCTION

		Milk Dtrs 0	Milk Herds 0
Milk	963	Milk Rel	81%R
Fat	63	% Fat	0.09%
Protein	50	% Pro	0.07%
CFP	113	Feed Eff	156

**510
SEXED**

HEALTH

SCS	2.89	HCR	1.2	DWPS
PL	2.4	CCR	0.5	WTS
Liv	-0.5	Mastitis	1.7	CWS
DPR	-0.6			Z Mast

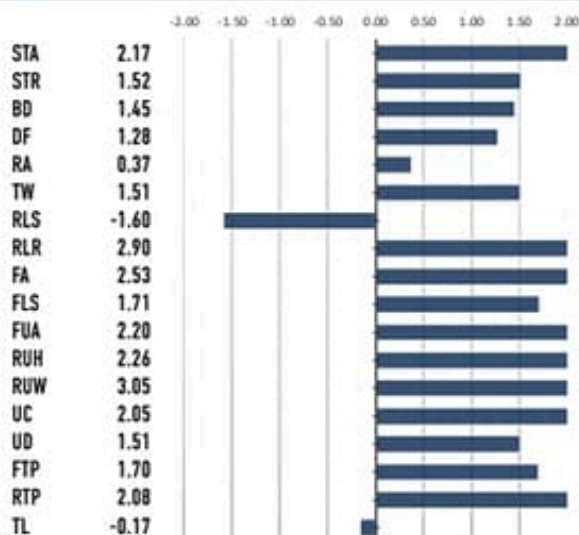
CALVING

SCE	1.9	DCE	1.3	SSB	6.5	DSB	3.8
SCE Obs	386	DCE Obs	0	SSB Obs	330	DSB Obs	0

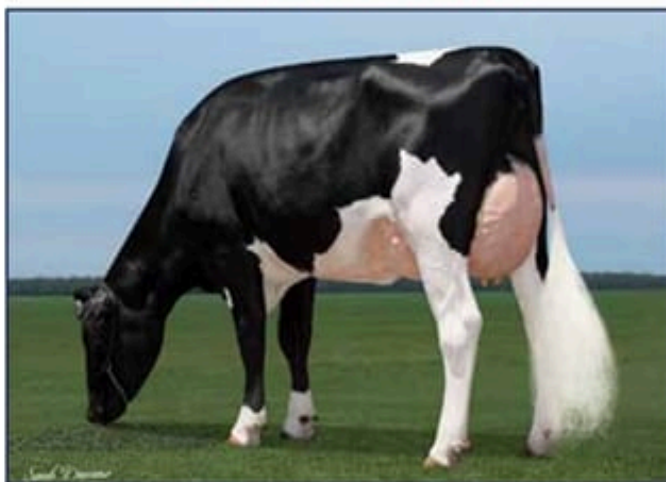
Type 2.43 UDC 1.84 FLC 1.62 REL 80

Type Dtrs 0

Type Herds 0



**EXTREMELY BALANCED PROOF!
PROVEN COW FAMILY - EX DAM!
OUTLIER FOR FERTILITY!**



Dam: Calori-D Crs Money-ET EX-91



MGD: S-S-I Yoder Monay10966-ET VG-87

100H012205



11116 Sierra Road
Oakdale, California
(209) 847-4797
info@jlgenterprises.com